

NEW!

Aspen ROM Knee

CODE L1832/L1833 APPROVED

XS	648101	L	648104
S	648102	XL	648105
M	648103	XXL	648106

The Aspen ROM Knee is a range of motion brace that provides optimal compression and support. The sized version features a premium AirX material that provides a high degree of breathability and moisture wicking, allowing for extended wear and improved patient compliance.



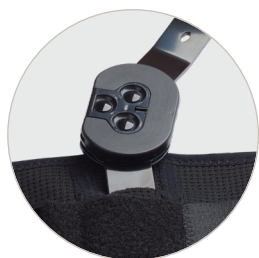
Aspen ROM Knee Universal

Provides adjustability to fit most patients. Made from a lightweight neoprene material, this option allows for optimal compression and comfort.

Aspen ROM Knee Universal
Code L1832/L1833 Approved

648111





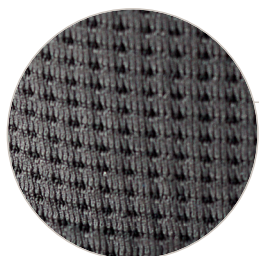
Hinge

Sturdy hinge struts allow for optimal customization.



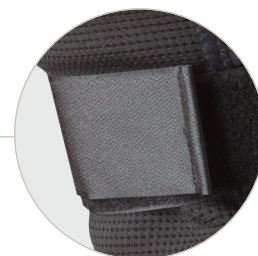
Hinge Adjustment

Easy access range of motion hinge.



Comfort

Advanced AirX material provides ideal compression with a high degree of breathability and moisture wicking.



Posterior Strap

Posterior strap for additional adjustment and comfort.



Accessory

Aspen Knee Suspension Wrap
Code L2397 Approved

Aspen Knee Suspension Wrap

The Aspen Knee Suspension Wrap can be used in conjunction with the Aspen ROM Knee for patients needing additional support.

651111

Aspen ROM Knee XS - Code L1832/L1833 Approved - 11-15 in (27.94-38.1 cm)	648101
Aspen ROM Knee S - Code L1832/L1833 Approved - 15-18 in (38.1-45.72 cm)	648102
Aspen ROM Knee M - Code L1832/L1833 Approved - 18-21 in (45.72-53.34 cm)	648103
Aspen ROM Knee L - Code L1832/L1833 Approved - 21-24 in (53.34-60.96 cm)	648104
Aspen ROM Knee XL - Code L1832/L1833 Approved - 24-27 in (60.96-68.58 cm)	648105
Aspen ROM Knee XXL - Code L1832/L1833 Approved - 27-35 in (68.58-88.9 cm)	648106
Aspen ROM Knee Universal - Code L1832/L1833 Approved	648111